



MARCH 7, 2025

4-H Family News

Ingham County



Still Life Workshop



scan me to register!

Join MSU Extension and 4-H for a fun filled day with Still Life Projects!

SESSIONS INCLUDE: CLOVERBUDS, RAG RUGS, EASTER GLASS, DIAMOND PAINTING, WOODWORKING, FANTASTIC NUCLEI, CANDLE MAKING, FLOWER PRESSING, SHOOTING SPORTS, FISHING, HUNTING AND WILDLIFE, GNOME MAKING, DISCOVER CHOCOLATE, AND MORE!

DATE & TIME	LOCATION	ENTRY FEE
MARCH 8TH 9AM	NORTH AURELIUS ELEMENTARY SCHOOL 115 NORTH AURELIUS, MASON	\$5 PER PERSON

Registration: <https://ingham4-Hstilllife2025.4honline.com>

Contact Us:

Glenda Weiss

4-H Program Coordinator
weissgle@msu.edu

Michigan State University Extension
Ingham County Hilliard Bldg
121 E. Maple Street, PO Box 319
Mason, MI 48854
Ph: 517.676.7207

Rachel Ochylski

4-H Urban Program Coordinator
ochylski@msu.edu

Michigan State University Extension
Ingham County Human Services Bldg
5303 S. Cedar Street
Lansing, MI 48911
Ph: 517.676.7300

Ingham County 4-H

<https://www.canr.msu.edu/ingham/4-h/>

Facebook

<https://www.facebook.com/Ingham4Hyou>

Michigan 4-H Volunteer Webinar Series

The Heart of 4-H: Cultivating Developmental Relationships with Youth

March 18th at
Noon or 7pm



MSU is an affirmative-action, equal-opportunity employer, committed to achieving excellence through a diverse workforce and inclusive culture that encourages all people to reach their full potential. Michigan State University Extension programs and materials are open to all without regard to race, color, national origin, gender, gender identity, religion, age, height, weight, disability, political beliefs, sexual orientation, marital status, family status or veteran status. Issued in furtherance of MSU Extension work, acts of May 8 and June 30, 1914, in cooperation with the U.S. Department of Agriculture. Quentin Tyler, Director, MSU Extension, East Lansing, MI 48824. This information is for educational purposes only. Reference to commercial products or trade names does not imply endorsement by MSU Extension or bias against those not mentioned.

Clovers CODE SPIN Club

Join MSU Extension and 4-H for a free SPIN club to explore the endless possibilities of technology!

Explore coding, photography, videography, art, and music through technology in this 6 week series!
No prior experience required.



Contact Mackenzie to schedule a time to host your club!

Mackenzie Meerschaert
meersch9@msu.edu

MICHIGAN STATE UNIVERSITY | Extension



MSU is an affirmative-action, equal-opportunity employer, committed to achieving excellence through a diverse workforce and inclusive culture that encourages all people to reach their full potential. Michigan State University Extension programs and materials are open to all without regard to race, color, national origin, gender, gender identity, religion, age, height, weight, disability, political beliefs, sexual orientation, marital status, family status or veteran status. The 4-H name and emblem are protected under 18 USC 707.

Join the 4-H SPIN Club: Learn to Code with Sphero!



Build skills over the course of 10 weeks to learn key coding concepts like sequences, loops, and functions while bringing them to life through hands-on activities. Build your creativity and problem-solving skills while playing with an interactive Sphero bot.

No prior experience needed—just bring your curiosity!

Contact Rachel to schedule a time to host your club!



Rachel Fitch
(313) 351-2340
fitchrac@msu.edu



MINDFULNESS on the MOVE

4-H Special Interest (SPIN) Club

Step up and take on mindfulness with this dynamic 4-H SPIN club!

Ages 8+
4-H enrollment required (free)

Session topics include:
-mindful movement (yoga, walking)
-the purpose of presence
-stress management

We will explore various mindfulness topics through hands-on and movement filled activities!

Questions?
Contact Erin Kelly
kellye31@msu.edu
(517) 676-7300

To register, go to 4-H online and select "SPIN Club Mindfulness on the Move 4-H"
<http://v2.4HOnline.com>



MICHIGAN STATE UNIVERSITY | Extension

SCAN ME



AmeriCorps

MSU is an affirmative-action, equal opportunity employer. Michigan State University Extension programs and materials are open to all without regard to race, color, national origin, gender, gender identity, religion, age, height, weight, disability, political beliefs, sexual orientation, marital status, family status or veteran status.



Taking Care of YOU

4-H Special Interest (SPIN) Club

Join us to learn how to stress less, feel good, & take care of yourself!

- Program includes
- Practicing self-kindness and gratitude with creative activities.
 - Learning stress management strategies and exploring mindful eating.
 - Reflecting on personal growth with art and vision boards.
- ...and more fun, activities!

Ages 11 +
4-H enrollment required (free)

Enjoy sessions on building mindfulness, managing stress, and celebrating personal growth!

Questions?

Contact Rachel Ochylski
ochylski@msu.edu
(517)-676-7300
To register, go to 4-H online and select "Taking Care of You" SPIN club
<http://v2.4HOnline.com>

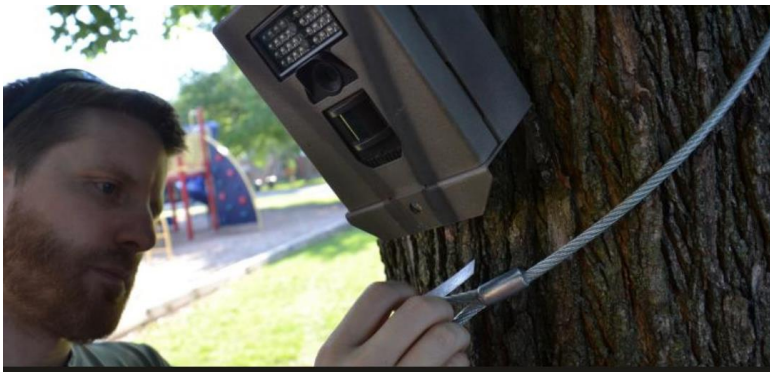


MICHIGAN STATE UNIVERSITY | Extension



AmeriCorps

MSU is an affirmative-action, equal opportunity employer. Michigan State University Extension programs and materials are open to all without regard to race, color, national origin, gender, gender identity, religion, age, height, weight, disability, political beliefs, sexual orientation, marital status, family status or veteran status.



Join Us Online

WILD SPARTANS

SCIENCE * RESEARCH * CAREERS * CONSERVATION

"THE URBAN WILDLIFE INSTITUTE:
LEARNING ABOUT ANIMALS IN THE CITY"

WITH SETH MAGLE, PH.D.
LINCOLN PARK ZOO

March 11 | 6:30 PM EST

Registration required:

https://events.anr.msu.edu/wildspartans2024_25



MICHIGAN 4-H HORSE PROGRAM WINTER WEBINAR SERIES



March 12th at 6pm: From the judges' perspective: Showmanship with Dr. Karen Waite



March 26th at 6pm: From the judges' perspective: Ranch Riding with Dr. Alyssa Logan

Any further questions email David Lindsay, Extension Educator at lindsa75@msu.edu


Driven for the Future Webinar Series

Rev Up Your Future: Careers in Automotive Performance and Evaluation


Thursday, March 20, 2025 at 6pm EST


Watch the whole series for an incentive!



Research & Development





MICHIGAN STATE UNIVERSITY Extension



Show us your Money Smarts 4/1-4/30 by engaging in missions, trivia, and puzzles all while learning and earning points!

Smart Money Missions Goosechase

There's even a chance to win prizes!!

MICHIGAN STATE UNIVERSITY Extension

Session topics include:

- Rally
- Showmanship
- Obedience
- Clicker Training
- Canine First Aid
- How to become a 4-H Dog Judge
- And more!




Staff contact:
Kat VanDouser
517-552-6903
Krollkat@msu.edu



MICHIGAN STATE UNIVERSITY Extension

2025 State 4-H Spring Dog Workshop



April 12th, 2025
9:00am-3:30pm

Isabella County Commission on Aging
2200 S Lincoln Rd, Mt Pleasant, MI 48858

Registration fee: \$35
Lunch provided

Registration Deadline: April 4th, 2025

<https://events.anr.msu.edu/2025DogWorkshop4H/>
Individual Session registration is day-of.

MSU is an affirmative-action, equal-opportunity employer. Michigan State University Extension programs and materials are open to all without regard to race, color, national origin, gender, gender identity, religion, age, height, weight, disability, political beliefs, marital status, family status, or veteran status

JOIN US!

SPRING 4-H OUTDOOR EDUCATION WORKSHOP

April 12-13, 2025
Camp Newaygo
Newaygo, MI



MICHIGAN STATE UNIVERSITY Extension

4-H GROWS HERE

REGISTER NOW!

MICHIGAN 4-H State Hippology Contest

March 15, 2025 at Michigan
State University

Anthony Hall, 474 S Shaw Ln, East Lansing, MI 48824

Contest Schedule

8:30 a.m. Check-In for Participants & Volunteers

9 a.m. Orientation (rules for the day, aligning technology, review schedule, etc.)

9:20 a.m. Begin Judging Phase

10 a.m. Go over correct answers for Judging Phase

10:15 a.m. Begin Slide Test Phase

10:45 a.m. Begin Written Exam Phase

11:30 a.m. Participants go to Holding Room. Participants will stay in the Holding Room until a designated volunteer instructs them to go onto the next phase of the contest. (This would be a good time for lunches, etc.)

11:30 a.m. Stations Phase and Team Problems Phase begin

3 p.m. Depending on size of contest, participants may wrap up around this time. They are welcome to leave once they have completed all the phases.

Scoring will happen as the last team problem concludes. After scoring we will begin the Award ceremony promptly. Contestants and Coaches are responsible for reading and adhering to the contest rules.

Registration is closed.



CONTACT
DAVID LINDSAY
EXTENSION EDUCATOR
4-H YOUTH HORSE PROGRAMS
LINDSA75@MSU.EDU



MSU IS AN AFFIRMATIVE ACTION/EQUAL OPPORTUNITY INSTITUTION. MICHIGAN STATE UNIVERSITY EXTENSION EDUCATION PROGRAMS AND MATERIALS ARE AVAILABLE TO ALL WITHOUT REGARD TO RACE, COLOR, NATIONAL ORIGIN, GENDER, GENDER IDENTITY, RELIGION, AGE, HEIGHT, WEIGHT, DISABILITY, POLITICAL BELIEFS, SEXUAL ORIENTATION, MARITAL STATUS, FAMILY STATUS OR VETERAN STATUS.

MICHIGAN STATE UNIVERSITY OCCUPIES THE ANCESTRAL, TRADITIONAL AND CONTEMPORARY LANDS OF THE ANISHINAABEG – THREE FIRES CONFEDERACY OF OJIBWE, ODAWA AND POTAWATOMI PEOPLES. THE UNIVERSITY RESIDES ON LAND CEDED IN THE 1819 TREATY OF SAGINAW.

4-H EXPLORE THE FARM THROUGH THE SEASONS



All About Swine Class

 4-H GROWS HERE  MICHIGAN STATE UNIVERSITY | Extension

Schomaker Farms and Saginaw 4-H Michigan State University are teaming up to offer a 12-month farm education learning series in 2025. Each month will offer a different learning topic and hands-on activity. Youth will be fully immersed in the farming experience!

All sessions will take place at Schomaker Farms located at 1103 Leddy Rd, Saginaw, MI 48609 (Shields Area)

Open to ages 5-19. Activities are best suited for youth ages 8-13. Younger youth may need help with activities.

4-H membership is required. Space is limited!

Cost: \$10 per session per youth or \$20 per youth for 3 sessions. Youth under the age of 5 may attend along with a registered sibling. NO REFUNDS will be given.

Additional program details will be sent to all participants prior to the start of each session.

Date: Thursday, March 20

Time: 5:45pm -6:45pm

All About Pigs - Dive into the delightful world of pigs and their adorable farrowing adventures—plus, get ready to meet the cutest little piglets fresh from the farm

2025 Norma Agnew Memorial 4-H Hairy Horse Show

March 22, 2025 8:00AM - 5:00PM

Registration Deadline: March 15, 2025 - 11:59PM

4301 Farm Lane, Lansing, MI 48910

Contact: David Lindsay: 517-353-1748, lindsa75@msu.edu

The Norma Agnew Memorial 4-H Hairy Horse Show is a fun "fuzzy" horse show to get back in the arena after a long winter. There are feedback classes, where you hear live feedback from the judge while you are in the ring, as well as regular classes.

Reserve your stall today as space is limited!!!

MICHIGAN STATE
UNIVERSITY

College of Veterinary Medicine

VETERINARY EDUCATION DAY

SATURDAY, MARCH 22, 2025 @ 12-3:30 P.M.
HYBRID EVENT – REGISTRATION IS
REQUIRED

Join us for presentations and student panels representing our preveterinary, Veterinary Nursing, and Doctor of Veterinary Medicine Programs. The event is ideal for high school students, college students or post-college individuals considering a veterinary career!

Meet current students, faculty, & staff, ask questions, & learn how to apply!



Register Here!



MICHIGAN 4-H HORSE PROGRAM



March 29: Michigan 4-H/FFA State Horse Judging Contest

Registration Deadline: March 7, 2025 - 11:59PM

Farm Bureau Pavilion

Contact: David Lindsay: 517-353-1748, lindsay75@msu.edu

In the state horse judging contest, participants can demonstrate their equine evaluation and selection skills, as well as improve their communication and decision-making skills.

This contest will include both individual and team competition for 4-H and FFA members. There are opportunities for the top three senior horse judging teams to go on to compete at the National 4-H level.

The 2025 4-H/FFA Horse Judging Contest will be held Saturday, March 29, 2025 at the Farm Bureau Pavilion at Michigan State University.

Check-in will take place from 8-8:30 a.m. and the contest will begin promptly at 9 a.m.

COST: \$10 per participant

This fee covers entry into both the 4-H and FFA divisions if the individual is competing in both. Payment is due at the time of registration.

Registration deadline is March 7. No late registrations will be accepted.





STATEWIDE CALENDAR OF EVENTS

4-H Youth in Action Program applications open



Apply now for the 2026 4-H Youth in Action Awards! Each year, the program recognizes four confident young leaders with diverse backgrounds and unique perspectives who are making a difference in their communities.

Winners will have the once-in-a-lifetime opportunity to share their stories along with unforgettable experiences, celebration on the national stage, recognition in the media and a \$5,000 college scholarship.

This opportunity is open to youth ages 14-19. The deadline to apply is March 31. Learn more and apply at <https://4-h.org/programs/4-h-youth-in-action-program/application/>.

March 3: Adulting 101 – Get It Together: Tim and Organization Tips to Thrive

Online

Learn practical tips to tackle schedules, beat procrastination and organize spaces to help you be successful now and in the future.

www.canr.msu.edu/events/get-it-together

March 11: 4-H Give Green Day

Online

Help us reach our goal of raising \$5,000 in a 24-hour period on Give Green Day to support learning experiences for Michigan 4-H youth.

www.canr.msu.edu/events/4h-give-green-day

March 11: Wild Spartans

Online

Join 4-H staff for the "Wild Spartans" series for a look into life working with fisheries and wildlife! This month's session will explore conservation efforts in zoos with Seth Magle, director of the Urban Wildlife Institute at the Lincoln Park Zoo in Chicago.

www.canr.msu.edu/events/wild-spartans-monthly-wildlife-fisheries-webinar-series-march-2024-2025

March 15: Michigan 4-H Hippology Contest

East Lansing

Youth aged 5-19 are eligible to demonstrate their comprehensive equine knowledge and skills in an engaging setting.

www.canr.msu.edu/events/2025-michigan-4-h-state-hippology-contest

March 18: Mich. 4-H Volunteer Webinar - Cultivating Developmental Relationships with Youth

Online

Explore how to build impactful connections with youth through developmental relationships. This series will provide volunteers with a variety of learning opportunities to help them grow as a volunteer and support Michigan 4-H'ers. This session will be offered twice:

- **12 p.m. session:** www.canr.msu.edu/events/michigan-4-h-volunteer-webinar-series-the-heart-of-4-h-cultivating-developmental-relationships-with-youth-noon
- **7 p.m. session:** www.canr.msu.edu/events/michigan-4-h-volunteer-webinar-series-the-heart-of-4-h-cultivating-developmental-relationships-with-youth-7pm

April 1: 2025 Michigan 4-H State Awards application deadline

Online

This program provides 4-H members a learning experience where they can develop career skills by using their 4-H experiences to compile a portfolio similar to a professional application while receiving recognition for their 4-H involvement.

www.canr.msu.edu/events/2025-michigan-4-h-state-awards-application-deadline





STATEWIDE 4-H NEWS

Open your home to a student with the 4-H International Exchange Program!

Michigan 4-H will have 10 Japanese youth and one chaperone arriving in 2025; we are looking for families interested in opening their homes and hearts by hosting these individuals. Consider sharing the clover this summer and giving a lucky Japanese youth and your family the experience of a lifetime by hosting!

The Japanese delegation is scheduled to arrive in Grand Rapids in mid-July and depart in mid-August, meeting host families for a 3.5-week stay. Online applications to host can be found at:

<https://www.states4hexchange.org/apply/host/>.

For more information, contact Michigan 4-H International Exchange Program Coordinator Jan Brinn at brinn@msu.edu.



MSU Extension launches 2025 Global Voices Essay Contest with MSU Global Youth Advancement Network

The Global Voices Essay Contest offers a platform for young people around the world to advocate for their communities and share their opinions and stories about local and national challenges. Michigan students in grades 9-12, and young adults ages 18-24, are invited to share their own stories, reflections and visions by writing and submitting a 600-900-word essay focused on community (defined as the rich tapestry of cultures, experiences and ideas that shape our state). Sub-themes for the essay contest include shared natural resources, heritage and home, bridges of unity, innovation for the future and other.

A panel of MSU, MSU Extension, and Michigan 4-H judges will review and select the winning essays, which will be published on the MSU Global Youth Advancement Network website and receive cash prizes!

The deadline for youth to submit their essay online is May 2. For more info please visit: <https://globalyouth.isp.msu.edu/programs-projects/global-voices/essay-contest/call-submissions-2/>

Michigan 4-H needs your input!

Michigan 4-H is conducting a survey to better understand the topics and educational approaches that best meet community needs. Your feedback will help us improve and enhance how Michigan 4-H serves families across the state.

Visit https://msu.co1.qualtrics.com/jfe/form/SV_bqmeT5Dxtthvjca or scan the QR code to share your input and help shape the future of the Michigan 4-H program. If you have questions regarding this survey, please reach out to Kathy Fischer at fisch226@msu.edu.





MICHIGAN STATE
UNIVERSITY

Arbor Day

Celebration

Tree & Pollinator Garden Planting

You're invited on **April 25th, 2025** at **12 Noon** along the banks of the Red Cedar River between **Kellogg Ramp** and **Jenison Field House** in **lot 67** for the annual Arbor Day planting.

Infrastructure Planning & Facilities and Landscape

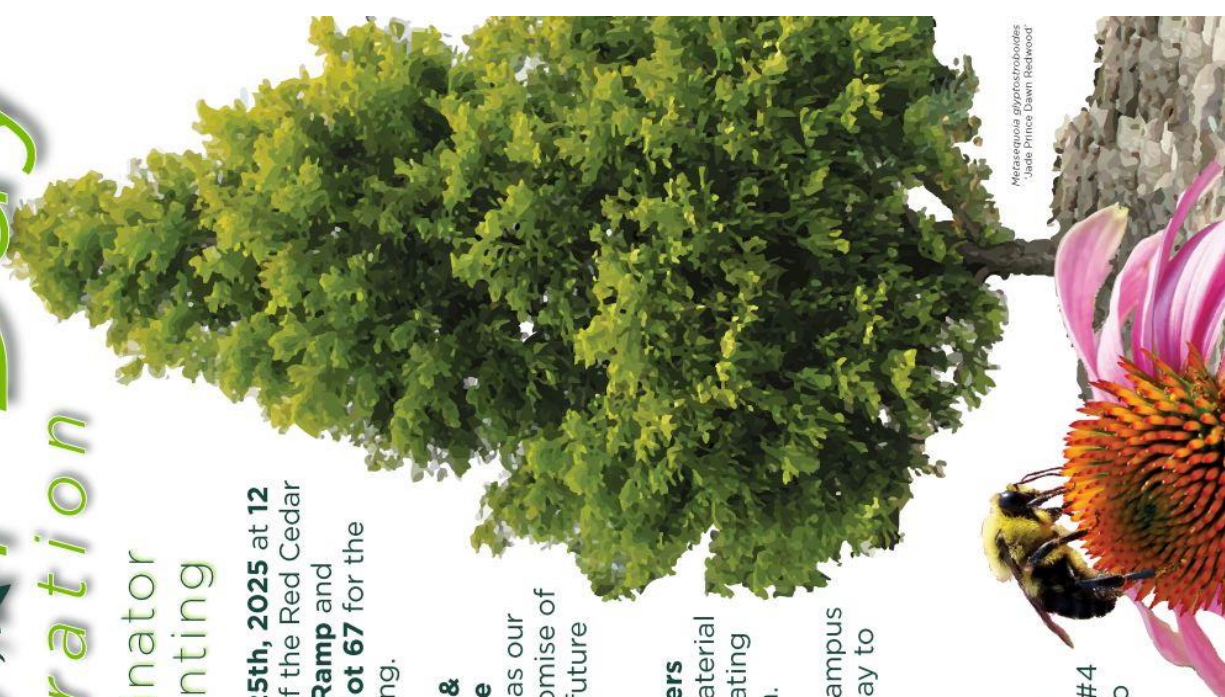
Services welcomes you as our guest to support the promise of keeping MSU green for future Spartan generations.

Join the **MSU Landscapers** installing native plant material along the riverbank, creating a new **pollinator garden**.

FREE TREES from our campus nursery will be given away to the **first 100** people in attendance.

Bring your camera, **SPARTY** will be on-site.

Parking: Kellogg Ramp #4 walk either footbridge to lot 67 at Jenison Field House.



Mesaspisula glyptostrobiloides
"Jade Prince Dawn Redwood"

Arbor Day

Celebration
Tree & Pollinator Garden Planting

Friday, April 25th
12:00pm

Harrison Rd

Kellogg Parking Ramp #4
PARK HERE

Event Location

Jenison Field House

Lot 67

Lot 67

Kalamazoo St



MICHIGAN STATE
UNIVERSITY

Help MSU clean the Red Cedar River



MICHIGAN STATE UNIVERSITY

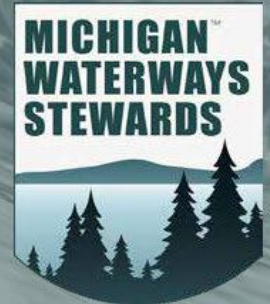
Infrastructure
Planning and Facilities

Red Cedar River Clean-Up
Friday, March 21st at 12pm - 1:30pm

Location: Rivertrail at Bogue St. / Lot 23
Between Van Hoosen Hall and Owen Hall
(West end of Sanford Natural Area)



Partners will host a volunteer event on
Sunday, March 23rd at 11am - 3pm



CLICK or SCAN for more information

Red Cedar River Clean-Up

MSU IPF - Landscape Services
Friday, March 21st 12pm - 1:30pm

Partner Event for Volunteers
Sunday, March 23rd 11am - 3pm



Bridges / Magnet Fishing Locations (purple line)

Parking Location: **SHAW RAMP**

MICHIGAN STATE UNIVERSITY

Infrastructure
Planning and Facilities



CITIZENSHIP WASHINGTON

FOCUS



Calling all future change agents!

SAVE THE DATE

June 20-27, 2025



The Michigan 4-H Delegation will leave **by bus** on Friday, June 20 at 1:00pm. We will **stay the night in Gettysburg** and tour the battlegrounds the next morning before heading to the Hyatt Regency in Bethesda, MD for **6 days** of eventful programming. This includes **meetings with our Senators and Representatives**, tours of many **monuments** provided by a licensed DC tour guide, **incredible workshops** that teach life skills like civil discourse and critical thinking, and much more!

The total **cost is \$2,500.00** (includes transportation from East Lansing and back, all lodging, conference costs, and most meals). Six meals and spending money will need to be provided by participants.

For additional information, go to the website at:
<https://4-h.org/events/citizenship-washington-focus/>

Enroll in 4-H Online at <https://v2.4honline.com/#/user/sign-in> and then **register through Events**.

Contact your County 4-H Program Coordinator to **find out about local scholarships**:
<https://www.canr.msu.edu/outreach/county>

For more information, contact Liana Pepin at deisenro@msu.edu or **906-315-2663**

“Visiting DC was incredible, giving me the opportunity to visit historical monuments and museums that I had never seen. I really liked when we got to tour the Capitol Building as well as meet with our Congressional representatives. I also met people from all over the USA and made long-lasting friendships. It was truly one of the best weeks of my life and I encourage anyone who has the chance to participate in CWF to take it!” Ansel Frost- 2019 CWF Delegate

MSU is an affirmative-action, equal-opportunity employer. Michigan State University Extension programs and materials are open to all without regard to race, color, national origin, gender, gender identity, religion, age, height, weight, disability, political beliefs, sexual orientation, marital status, family status or veteran status

SAVE



WRITE



ATTEND



CHANGE



www.canr.msu.edu/wfpmyi/

MICHIGAN STATE UNIVERSITY | Extension

CITIZENSHIP WASHINGTON

FOCUS

Calling all future change agents!



SAVE THE DATE

JUNE 20-27, 2025

REGISTRATION IS NOW OPEN!

4-H GREAT LAKES & NATURAL RESOURCES CAMP



July 27-August 2, 2025
Camp Chickagami
Presque Isle, MI

MICHIGAN STATE UNIVERSITY | Extension

4-H GROWS HERE

4-H Great Lakes & Natural Resources Camp

Seeking Camp Counselors

If you are:

- ✓ 16-20 years old
- ✓ Enjoy working with kids and the outdoors
- ✓ Available July 25 - August 2, 2025



Join our team this summer at Camp Chickagami in Presque Isle for an enriching week of leadership and personal growth as you guide 13-15 year old campers on adventures filled learning experiences!

To learn more or register, contact:

Joe Kreider
kreider4@msu.edu



Raye Host
hostrae1@msu.edu



MICHIGAN STATE UNIVERSITY | Extension

WORLD FOOD PRIZE



MICHIGAN YOUTH INSTITUTE

AT MICHIGAN STATE UNIVERSITY
MAY 8, 2025

The World Food Prize Michigan Youth Institute is a life-changing experience at Michigan State University where students in grades 7-12 engage with leading experts on critical global challenges, participate in engaging activities and tours, and explore exciting ways to make a difference in Michigan and around the world!

At the event, participants will:

- Present their own research and recommendations on how to solve key global challenges in a short speech and small group discussions with MSU faculty, staff, students, peers, and other experts.
- Connect with other student leaders from across Michigan to share ideas, identify solutions to global challenges, and build lasting friendships.
- Take part in educational sessions to explore current research and issues in food, agriculture, natural resources, energy, STEM, international policy, and sustainable development.
- Qualify to apply for domestic fellowships and international internships, and to be nominated for a \$2000 Spartan Youth Programs Pre-College Scholarship from MSU.

Registration and paper due March 15, 2025.



MICHIGAN STATE UNIVERSITY | Extension



MSU is an affirmative-action, equal-opportunity employer, committed to achieving excellence through a diverse workforce and inclusive culture that encourages all people to reach their full potential. Michigan State University Extension programs and materials are open to all without regard to race, color, national origin, gender, gender identity, religion, age, height, weight, disability, political beliefs, sexual orientation, marital status, family status or veteran status.